

sanindusa[®]

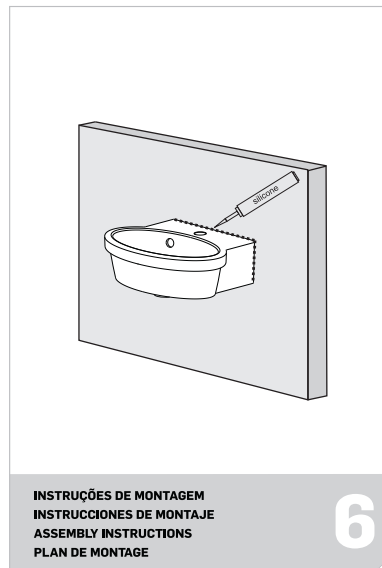
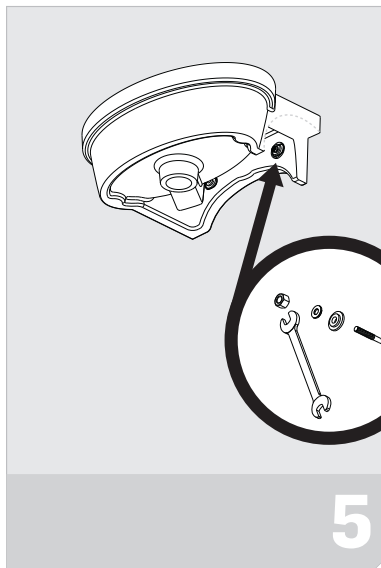
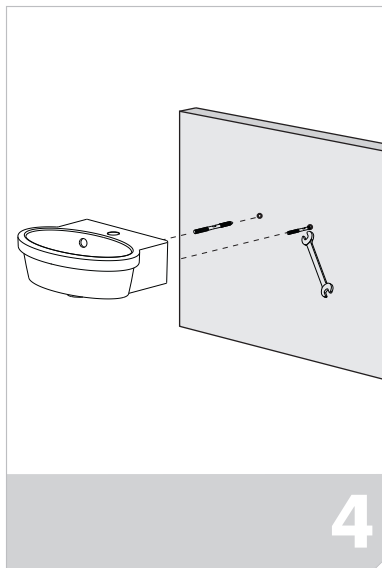
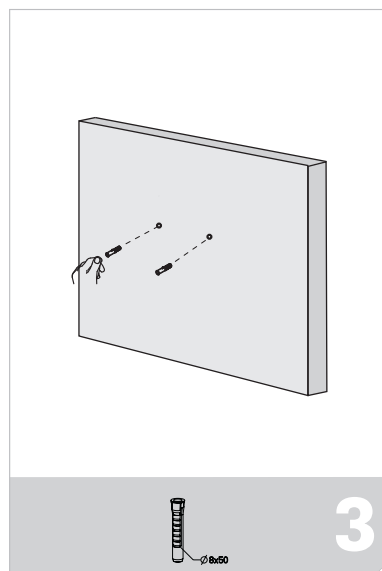
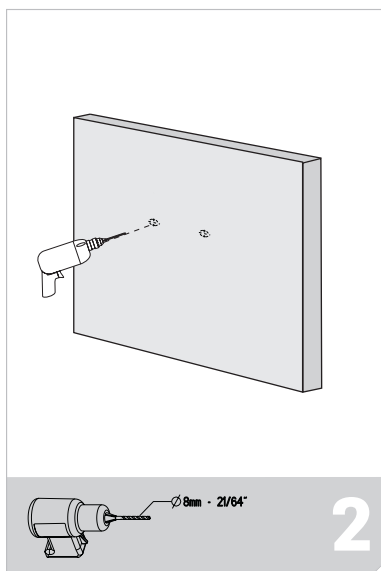
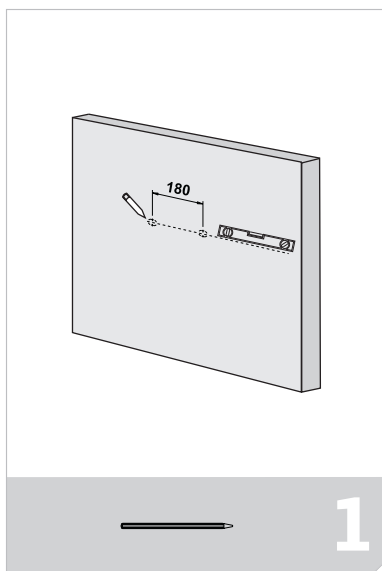
instruções de montagem

instrucciones de montaje

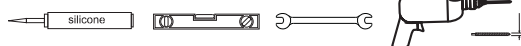
mounting instructions

notice de montage

nau 45 Lavatório
Lavabo
Wash basin
Washtisch



material necessário para a montagem
para la instalación hace falta
for the installation you need
pour le montage sont necessaires



KIT DE FIXAÇÃO INCLuíDO NA CAIXA:
KIT DE FIXACIÓN INCLUYDO NA CAJA:
FIXATION KIT ENCLOSED ON THE BOX:
KIT DE FIXATION INCLUS SUR LA BOÎTE:



Sanindusa S.A. reserva o direito de fazer alterações técnicas, sem aviso prévio.
Sanindusa S.A. reserva el derecho de hacer alteraciones técnicas sin previo aviso.
Sanindusa S.A. reserves the right to introduce technical improvements without previous advice.
Sanindusa S.A. réserve le droit de faire des alterations techniques sans avis préalable.
Sanindusa S.A. behält sich ohne vorangehende angabe alle rechte vor in bezug auf gestaltung technischer veränderungen der produkte.

sanindusa
Indústria de Sanitários, S.A.

Sanindusa - Indústria de Sanitários S.A.

Zona Industrial Aveiro Sul Apartado 43
tel. +351 234 940 250 fax +351 234 940 266

3811-901 Aveiro Portugal
sanindusa@sanindusa.pt

sanindusa
GRUPPO
www.sanindusa.pt

www.sanindusa.pt

code. 106340IM-00