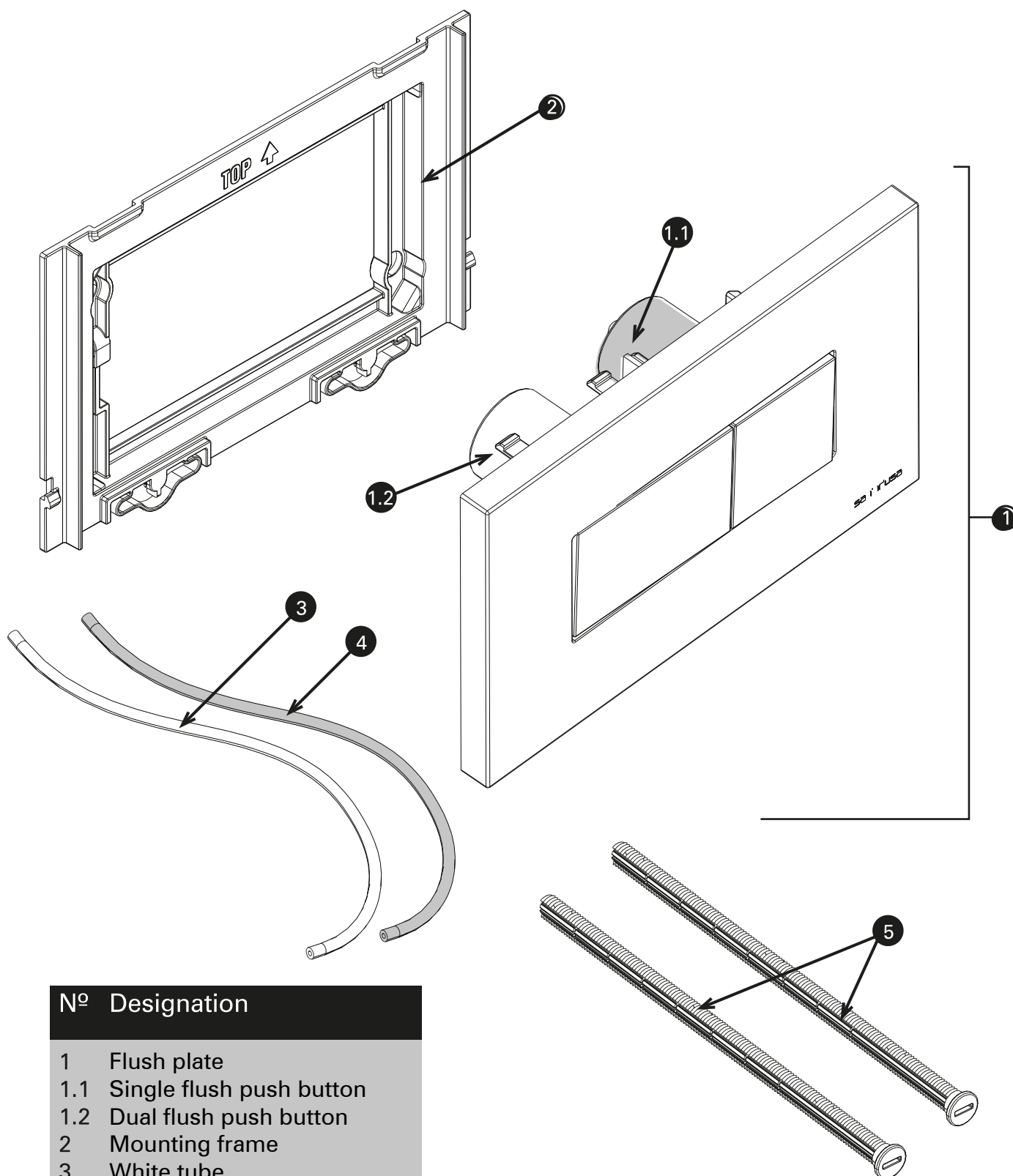


FLUSH PLATE

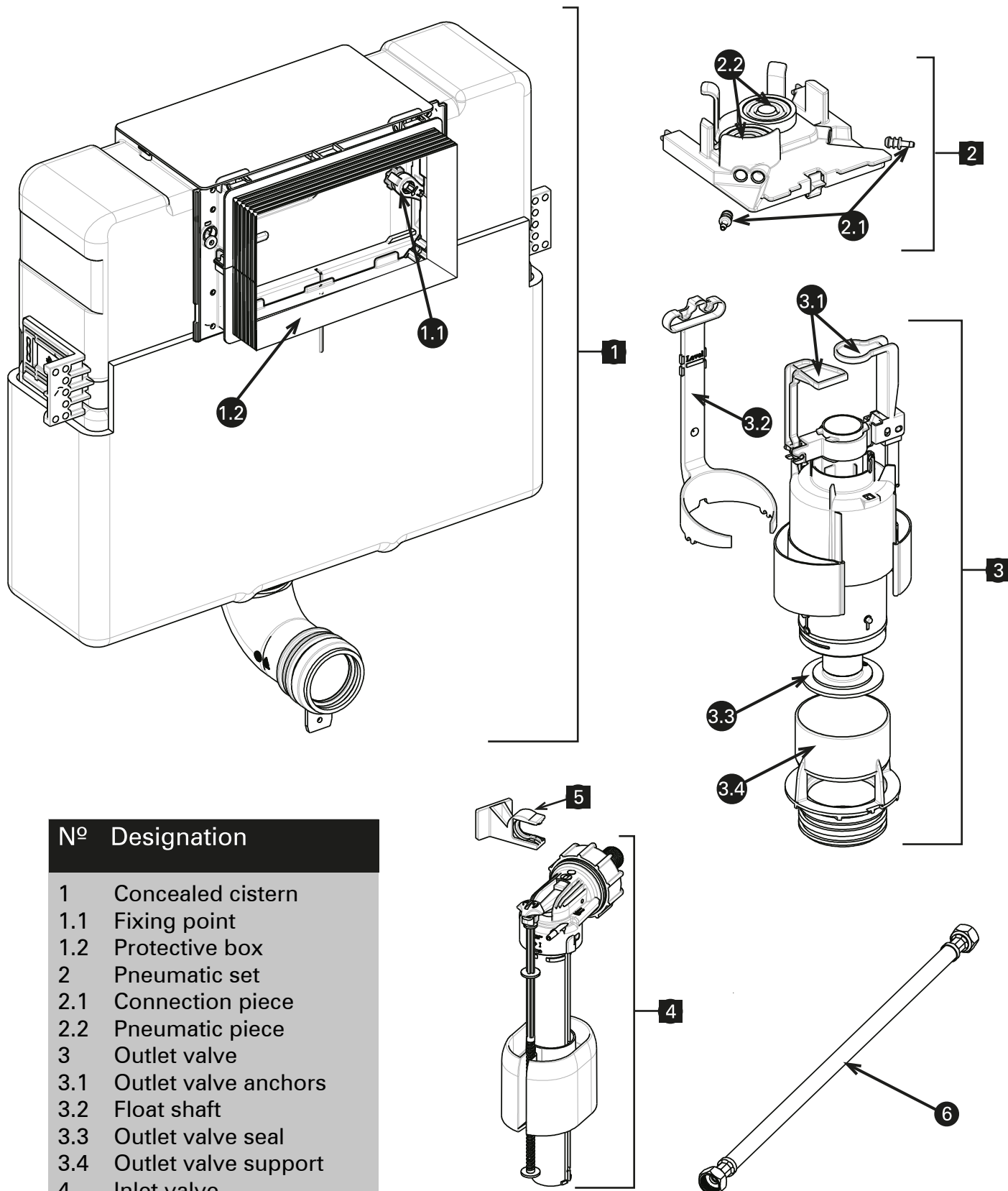


Nº Designation

- 1 Flush plate
- 1.1 Single flush push button
- 1.2 Dual flush push button
- 2 Mounting frame
- 3 White tube
- 4 Blue tube
- 5 Fixing screws

Note: Sanindusa cannot be held responsible for any damage resulting from misinterpretation and/or partial or total failure to comply with the instructions in question. Sanindusa recommends carrying out this service by qualified professionals.

CONCEALED CISTERN



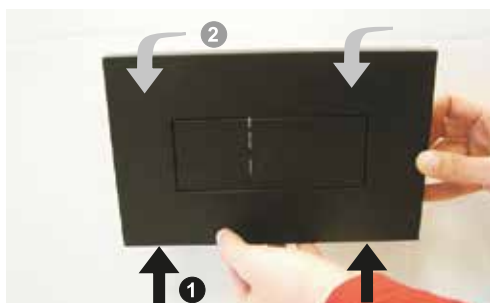
Nº Designation

- | | |
|-----|---------------------------|
| 1 | Concealed cistern |
| 1.1 | Fixing point |
| 1.2 | Protective box |
| 2 | Pneumatic set |
| 2.1 | Connection piece |
| 2.2 | Pneumatic piece |
| 3 | Outlet valve |
| 3.1 | Outlet valve anchors |
| 3.2 | Float shaft |
| 3.3 | Outlet valve seal |
| 3.4 | Outlet valve support |
| 4 | Inlet valve |
| 5 | Inlet valve support piece |
| 6 | Connection hose |

Note: Sanindusa cannot be held responsible for any damage resulting from misinterpretation and/or partial or total failure to comply with the instructions in question. Sanindusa recommends carrying out this service by qualified professionals.

WATER LEAKAGE

1st step – remove the flush plate



-Remove the plate according to the arrows in the adjacent image (1 push the plate upwards, 2 pull the plate out).
-Separate the tubes from their respective push buttons.

The leak stopped

Replace the flush plate

The leak didn't stop

2nd step - Check the water level



- Remove the pneumatic set by following the movement of the arrows in the adjacent image in order to view the float shaft (1 push the tab inwards, 2 pull the assembly upwards).

Check if the water level matches the "level" mark on the float shaft

It matches

See the following page

It doesn't match

See the following page

WATER LEAKAGE

The water level matches the "level" mark on the float shaft

3rd step – Remove the outlet valve/float shaft set

Close the inlet valve



- Press the float shaft tab downwards to remove it.



- Separate the anchors from the outlet valve and remove them.



- Remove the outlet valve/float shaft set.

See the following page

The water level doesn't match with the "level" mark on the float shaft

5th step – Remove the inlet valve

Close the inlet valve and remove the 4outlet/float shaft set (check step 3)

Loosen the nut that connects the inlet valve to the flexible pipe.

To remove the inlet valve press the holder tab.



Unscrew the inlet valve nut and check whether there is any dirt stopping it from closing.

There's dirt

Clean the valve under running water



Works

There isn't

Replace the inlet valve

Doesn't work

Replace the valve

WATER LEAKAGE

4th step – Replace the outlet valve seal



Put the valve/float shaft
set back into the cistern



Doesn't work

Remove the valve/float shaft set again



- Remove the outlet
valve support piece.



- Check if the seal of the
support (marked in the
picture with a red line) contains
any imperfections, cavities or burrs.

Has imperfections

Doesn't have imperfections

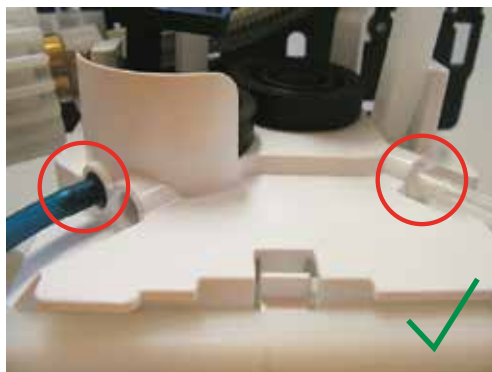
Replace the support

Replace the outlet valve

INSUFFICIENT FLUSH

Remove the flush plate (see the 1st step)

Check if the pneumatic pieces and tubes are correctly positioned.



Correct positioning

Activate the outlet valve by blowing air into the white tube.

Check whether the valve fully flushes

It does

Replace the
flush plate

It doesn't

Change the
outlet valve

Wrong positioning

Position the tubes correctly using the previous image as a guide.

FLUSH CHANGE

Remove the flush plate (see the 1st step)



**Check if the blue tube matches
the blue button on the flush plate**



It matches



Replace the valve.



It doesn't match



**Make the right connection
as shown above**